



GAT MONTHLY MEMBERSHIP PROGRESS REPORT

Results as of: 1/31/2022

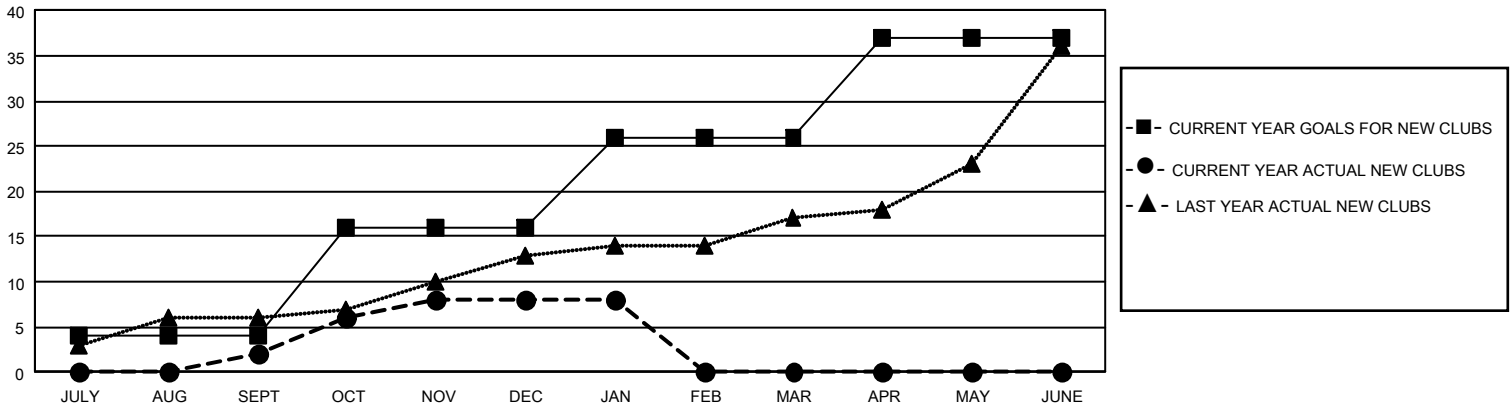
GAT Constitutional Area 2

REPORT DOES NOT INCLUDE CLUBS IN UNDISTRICTED AREAS.

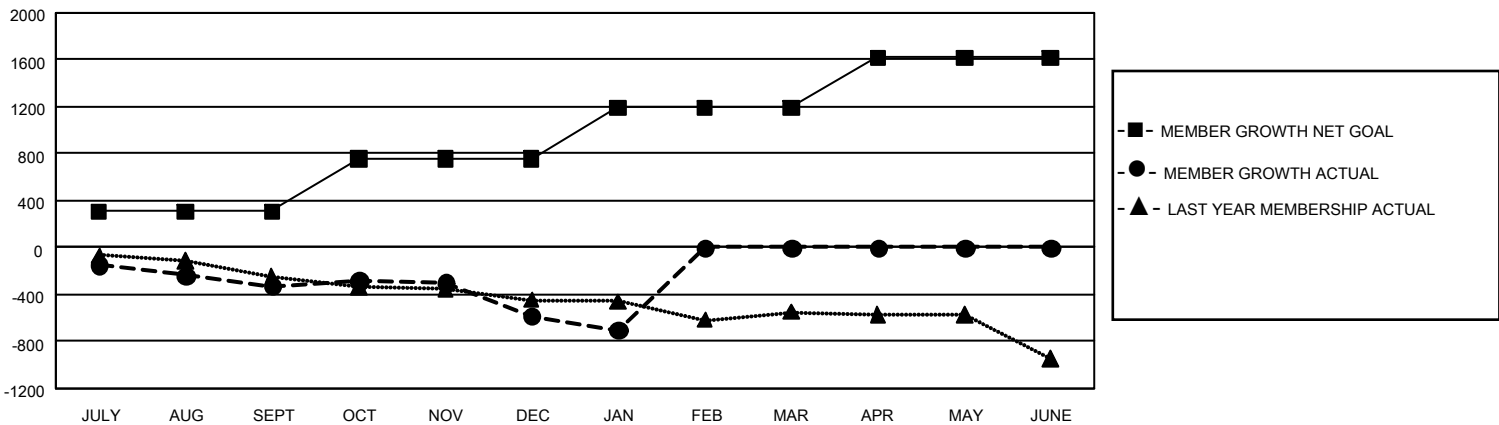
Clubs			
RESULTS FOR 2021-2022			
QUARTER	NEW CLUB GOAL	NEW CLUBS	DROPPED CLUBS
JULY/AUG/SEPT	12	2	9
OCT/NOV/DEC	36	6	13
JAN/FEB/MAR	30	0	4
APR/MAY/JUNE	33	0	0

Members			
RESULTS FOR 2021-2022			
QUARTER	MEMBER GROWTH NET GOAL	MEMBER GROWTH ACTUAL	DROPPED MEMBERS ACTUAL (including transfers)
JULY/AUG/SEPT	306	442	691
OCT/NOV/DEC	450	842	1,018
JAN/FEB/MAR	438	149	243
APR/MAY/JUNE	426	0	0

GOALS AND ACTUAL NEW CLUBS CUMULATIVE



GOALS AND ACTUAL MEMBERS CUMULATIVE



DROPPED CLUBS: 26	
DROPPED MEMBERS	
DECEASED	256
CLUB CANCELLED	151
OTHER	1,545
TOTAL	1,952

416 CLUBS OF 1,284 ADDED 1 OR MORE NEW MEMBERS

[CLICK HERE FOR CUMULATIVE MEMBERSHIP DATA](#)

GENDER DISTRIBUTION	
MALE	18,105 (66.07%)
FEMALE	9,294 (33.92%)
NON BINARY	0 (0.00%)
PREFER NOT TO ANSWER	2 (0.01%)
TOTAL FAMILY UNIT MEMBERS	4,989
FAMILY MEMBERS PAYING HALF DUES	2,558